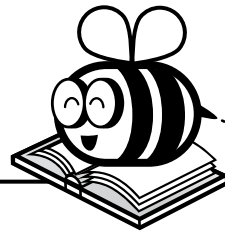


Name: _____



ELA Buzz

antecedent – word or phrase that a pronoun refers back to

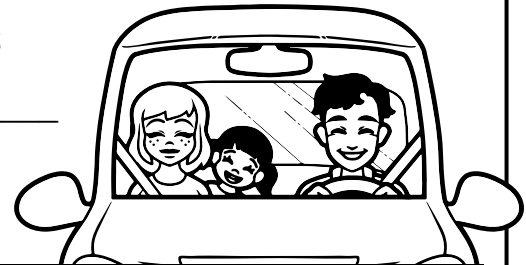
antibiotic – medicine that fights against bacteria

ante meridiem (a.m.) – before noon

antidote – substance given to counteract poison

Use two correctly spelled homophones to complete the sentence.

We have to hit the road at least an _____ and fifteen minutes before _____ game starts if we want to



Read the definitions. Then circle the



relative pronoun.

Circle its antecedent.

Ayaan reminded _____ to turn off his phone before the movie started.

Preview

Please log in to download the printable version of this worksheet.

the united states has been in many wars, but the term “antebellum period” refers specifically to the time before the civil war.

Circle the coordinating conjunction.

Hattie has to gather the ingredients and preheat the oven before she begins.

Circle what it creates.

compound sentence

compound predicate



Name: _____



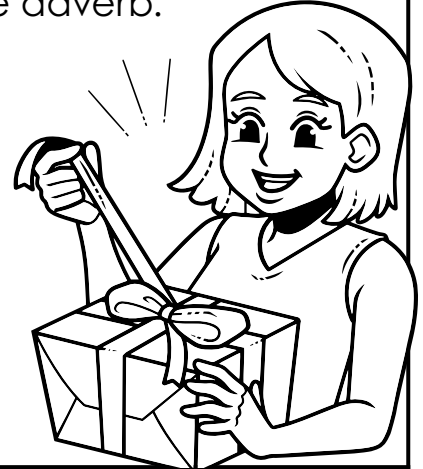
ELA Buzz

Check the box next to the correctly formatted speech.

- ☐ "Do you like unboxing videos?" asked Zhavia.
- ☐ Zhavia asked, "do you like unboxing videos?"
- ☐ "Do you like unboxing videos?" Asked Zhavia, "I do."

Circle the adverb that shows degree.
Underline the relative adverb.

The reason why Aunt Joanna opens presents really carefully is because she likes to reuse the wrapping paper.



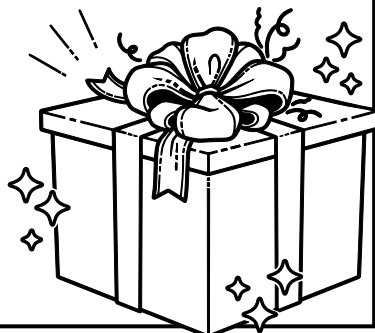
Preview

Please log in to download
the printable version of this worksheet.

- b. At a family get-together, Roy says he likes zoos. Uncle Saul says zoos are bad. Soon everyone is arguing. They are still angry with each other weeks later.
- c. Students and their families are mad when they learn field day is canceled. Then they find out it's just being rescheduled by a couple weeks.

Circle the incorrect commas.

The sparkly paper, fancy bows, and velvet trimming, were beautiful, but Karsyn would've been happy with a plain box, and nothing else.



Rewrite the sentence correctly.

I needs enuff ribon to rap around twice plus some extra. (5 errors)

Name: _____

ELA Buzz



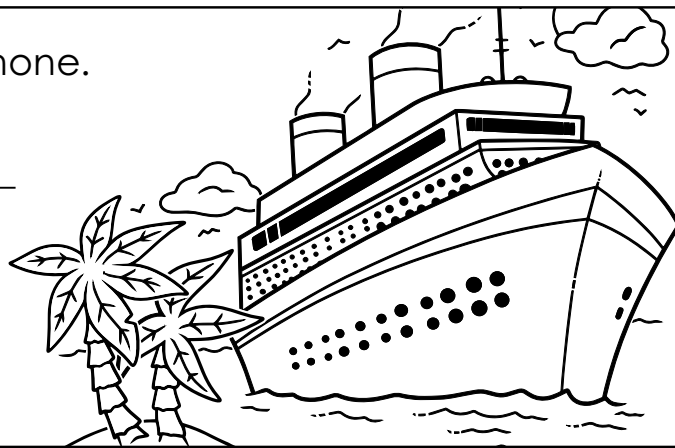
sweet – sugary; very kind

suite – a group of connected things, especially rooms

Fill in each blank with the correct homophone.

The Yangs booked a fancy _____
on the cruise.

Dad thought the food we ate was too
_____.



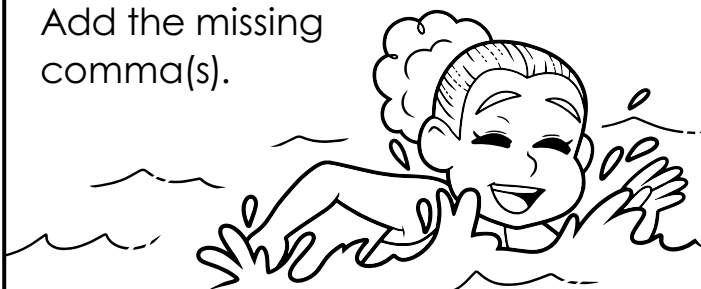
Preview

Please log in to download
the printable version of this worksheet.

**Nyla loves swimming yet she's
afraid of the ocean so we're
going to stay at a lake instead.**

How many clauses are in
the compound sentence? _____

Add the missing
comma(s).



In- is an absorbed prefix. Its second letter
changes to match the first letter of root or
base words that begin with **m**, **l**, or **r**. It also
changes to **im-** for the letters **p** and **b**.

Spell the absorbed prefix correctly to
complete each word.

I'll take an _____ perfect vacation over no
vacation any day.

It's hard to plan vacations with Mom's
_____ regular schedule.

Name: _____



ELA Buzz

Circle the coordinating conjunction in each sentence. Tell what kind of compound it creates by writing **S** (sentence), **O** (object), or **P** (predicate) on the line.

_____ Dad is auctioning his lawnmower but bidding on a leaf blower.

_____ I won my bids for the bedroom desk and fluffy rug.

Using context, add the correctly spelled prefix to complete the word.

Mr. Elsayed wanted to make sure he had a spot, so he _____ registered more than three months ago!



- 1) Can I bid on this item?
- 2) Should I bid on this item?



Preview

Please log in to download the printable version of this worksheet.

she wasn't interested in the glasses.



Accept is a verb most often used to mean *to willingly take or receive; to regard or permit as usual or fine*. **Except** is most often used as a preposition meaning *other than*. No matter its part of speech, **except** shows a contrast or special condition.

Fill in each blank with the correct word.

Atlas bid on every lot _____ the last one.

Does the auction _____ payments by check?

The auction hall doesn't _____ rude behavior.

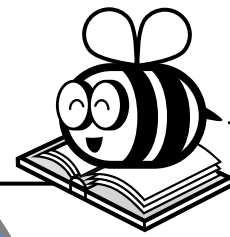
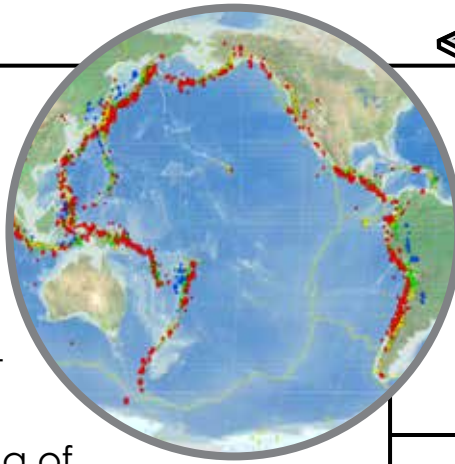


Name: _____

ELA Buzz

California is famous for its costly earthquakes. Places like Japan and Indonesia have more earthquakes than anywhere else. They're all part of a loop around the Pacific called the Ring of Fire. The Ring of Fire has around 75% of Earth's volcanoes and 90% of its earthquakes. The latter cause tens of billions of dollars in damage each year.

Hundreds of millions of people live in this ring. How do their homes ever survive? There are ways



Fill in the missing vowel.

People made
gen__rous donations
after the earthquake.

Write the adjectives in the
correct order to complete
the sentence.

several

sturdy



Preview

Please log in to download
the printable version of this worksheet.

Chimneys can be reinforced too.

Which organizational structure appears in the text?

chronology compare & contrast problem & solution

The details of the second paragraph support what key idea?

- a.** Buildings are never 100% earthquake-proof.
- b.** Columns are poor support structures.
- c.** Construction costs double in the Ring of Fire.

Name two ways to make a home more earthquake-proof.

injured
damaged
destroyed

The house was only slightly
_____.

Add punctuation to make
the sentence correct.

Personally said Sam I
wouldn't live there

Read the definitions. Then circle the meaning of each prefix.

anti - (against) before)
ante - (against) (before)

Use two correctly spelled homophones to complete the sentence.

We have to hit the road
at least an hour

Use context to fill in the blank with the correct reflexive pronoun. Circle its antecedent.

(Ayaan) reminded
himself to turn off

Circle the seven letters that should be capitalized.

The United States has been
in many wars, but the term
"antebellum period" refers

Circle the coordinating conjunction.

Hattie has to gather the
ingredients and preheat the
oven before she begins.

Preview

Please log in to download
the printable version of this worksheet.



Which organizational structure appears in the text?

(problem & solution)

The details of the second paragraph support what key idea?

a. Buildings are never 100% earthquake-proof.

Name two ways to make a home more earthquake-proof.

accept any two: stronger foundations;
springs in floors; materials built for
sideways shaking; multilayered walls;
reinforced chimneys and windows

Fill in the missing vowel.

People made
generous donations
after the earthquake.

Write the adjectives in the correct order to complete the sentence.

several sturdy

The walls have
several sturdy
layers.

Use the most accurate word from the box to complete the sentence.

injured
damaged
destroyed

The house was only slightly
damaged.

Add punctuation to make the sentence correct.

"Personally," said Sam, "I
wouldn't live there."